



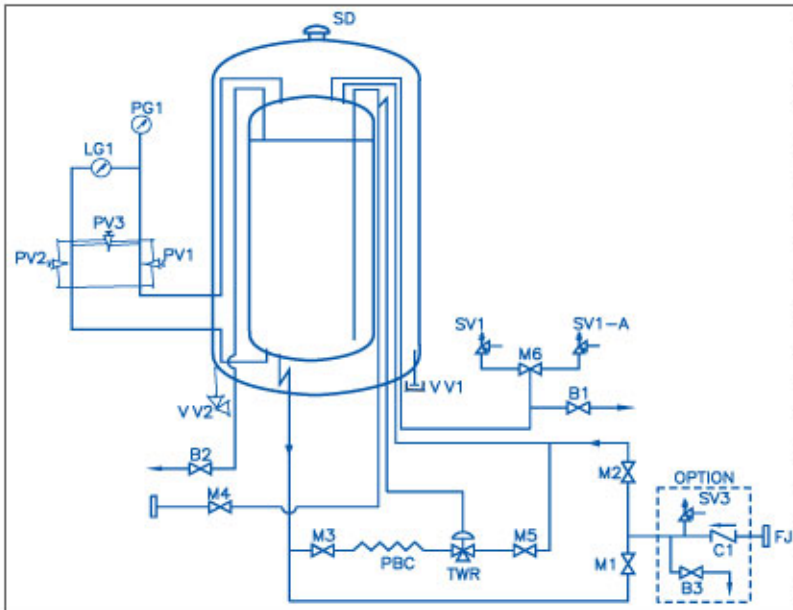
...Meeting
GLOBAL Standards



P
O
R
T
A
C
R
Y
O



- ✓ Portable Cryostorage units suitable for LIN, LOX, LAR & LCO₂ service
- ✓ Rugged steel frame protects all sides
- ✓ Highly efficient super insulation ensures efficient performance
- ✓ Special design ensures low filling losses
- ✓ Long stem globe valves provide ease in operation
- ✓ "Ready to use" units in vertical and horizontal options



C1	CHECK VALVE
B3	DRAIN VALVE
SV3	THERMAL RELIEF VALVE
B1	GAS WITHDRAWAL VALVE
V V2	EVACUATION PORT
V V1	VACUUM PROBE VALVE
FJ	FILLING JOINT
LG	LEVEL GAUGE
PG	PRESSURE GAUGE
PV1,PV2,PV3	LEVEL GAUGE VALVE
SV1,SV1A	I/V SAFETY VALVE
B2	OVERFLOW VALVE/VENT VALVE
TWR	THREE WAY REGULATOR
M6	FLOW DIVERTER VALVE
M5	VAPOUR RETURN
M4	LIQ. DELIVERY VALVE
M3	PRESSURE BUILDING COIL INLET
M2	TOP FILLING
M1	BOTTOM FILLING
SD	SAFETY DEVICE OUTER JACKET
PBC	PRESSURE BUILD COIL

TECHNICAL SPECIFICATIONS FOR PORTACRYO

DESCRIPTION	UNIT	0.5 KL	1.0 KL	1.5 KL	2.0 KL	3.0 KL
GROSS / NET VOLUME	(3) LIT	491/467	995/945	1506/1431	2021/1920	3057/2904
	USG	130/124	263/250	398/378	534/507	807/767
STORAGE CAPACITY	LIN (1) Kgs./lbs	377/831	764/1684	1156/2548	1551/3419	2349/5178
	LOX (1) Kgs./lbs	533/1175	1078/2376	1633/3600	2191/4830	3314/7305
	LAR (1) Kgs./lbs	853/1433	1321/2912	2001/4411	2684/5917	4060/8950
	LCO2 (1) Kgs./lbs	492/1085	995/2193	1507/3322	2022/4457	3058/6742
OPERATIONAL FEATURES						
NET EVAPORATION RATE, LIN	(2) % / day at STP	1.6	1.3	1.0	0.8	0.7
	LOX & LAR	1.0	0.8	0.6	0.5	0.5
EMPTY WEIGHTS (APPROX)						
For 19 Kg/cm2g or 270 psig Pressure	(1) Kgs./lbs	-	945/2084	1400/3087	1700/3748	2400/5291
For 24 Kg/cm2g or 340 psig Pressure	(1) Kgs./lbs	650/1433	970/2139	1475/3252	1825/4024	2525/5567
For 32 Kg/cm2g or 460 psig Pressure	(1) Kgs./lbs	-	1070/2359	1575/3472	1950/4299	2700/5952
OVERALL FRAME SIZE (L x W x H)	mm	1420 x 1136 x 1850	1600 x 1295 x 2185	1900 x 1600 x 2185	2100 x 1800 x 2185	2600 x 2200 x 2220
	inches	56 x 45 x 73	63 x 51 x 86	75 x 63 x 86	83 x 71 x 86	102 x 87 x 87

- Above weights are considered liquid saturated at Atmospheric pressure
- NER (Normal Evaporation Rate) specified at STP condition min. 95% fill
- Exact Volume could be +/-3% after stretching
- Tank designed to ADM & ASME code
- Withdrawal rate 30-60 Nm3/Hour
- Portability in filled condition for tanks upto 1 kl capacity
- Specifications are subject to change due to continuous product development / upgradation without prior notice

Features

- Combines all features of a customer station tank and liquid cylinder
- Product portability supports the option of being filled by Transport tanks at customer location / sites OR carried to ASU / bulk storage locations for filling
- Convenient handling by forklift, mobile crane, chain pulley or overhead crane
- High capacity regulator & PBU ensures continuous gas delivery with high purity
- Optional product vaporiser mounted on frame, provides continuous gas supply
- Steel plate frame protects valves, gauges and piping
- Stable base, for placing on levelled surface. Civil foundation not essential
- Ideal for 'temporary user points' application
- 100 mm (4") dia level & pressure gauge provide accurate measurement
- Flow diverter valve provides safety valve isolation for maintenance

Optionals

- Frame mounted product vaporizer or distribution manifold
- Rupture disc as secondary safety devices
- Customized filling and delivery connections
- Vacuum gauge tube
- Digital level measurements
- Check valve in filling line
- Stainless Steel outer vessel
- LNG Service
- Horizontal option



PORTACRYO



• Storage Tanks • Cold Converters • Transport Tanks and Trailers • ISO Tank Containers • Cryo Containers • Field Erected Flat bottom Tanks • Engineered Tanks • Vaporizers • Vacuum - Jacketed Piping • Turnkey Cryogenic Systems • Disposable Cylinders • CO2 Dry Cleaning Machines



CVA Inc.
9528 Warren Road
Mont Belvieu,
Texas 77580. USA

Tel : +1 281 385 1204
Fax : +1 281 385 1209
Email: sales@cvatanks.com
Web: www.cvatanks.com